

ASPIRE

MUSIC.DANCE.DRAMA

MAKE-UP and HAIR for ASPIRE 2018

Being on a stage as impressive and big as the Civic Theatre means there is a high importance on make up and hair for ALL performers. At

ASPIRE we are trying to give the students the tools and experience needed to be a part of the performing arts industry, including preparing themselves for the stage. We will be doing a tutorial on how to apply their own stage makeup before production as they will need to be able to do their own (or relay what is required to parents to apply at home). Please help your child out by having a makeup kit that they can use and bring to all shows. Please use things you already have to cut down costs, but if you do need to buy things know that they will last a while and these tools can be used for future productions that your child may be in. At the bottom of this page I have

found prices and products to help you out a bit.

Thank you for supporting these future stars! :-)

These are the items that need to be in your child's make up and hair kit: (All of these products should be long lasting as they will be sweating and changing costumes etc.)

FEMALES:

MAKE UP

Foundation - one that will give good coverage and the right colour for their skin tone.

They will need a sponge or brush to apply this.

Powder - translucent powder is needed to set their make up so it stays put and doesn't come off on costumes or sweat off.

Blush - a peachy/light rose colour is best. A blush brush will be needed to apply this.

Eyeshadow - a 3 or 4 colour pallet is more economical.

Find one with browns/creams/smokey charcoal.

Eyeliner - Please do not put liquid eyeliner in their kit if they have not used it before, a pencil is advised.

Mascara - waterproof black so it doesn't run. Seniors may wear false eyelashes if they are competent in applying. If using false eyelashes make sure they are not too thick or long as this makes them heavy and makes you look drowsy on stage.

Lipstick - same as blush, a peachy/light rose colour for all juniors. Seniors may wear a red if it suits costume.

Eyebrow Pencil - brown eyebrow pencil is needed to define brows. This is very important on stage.

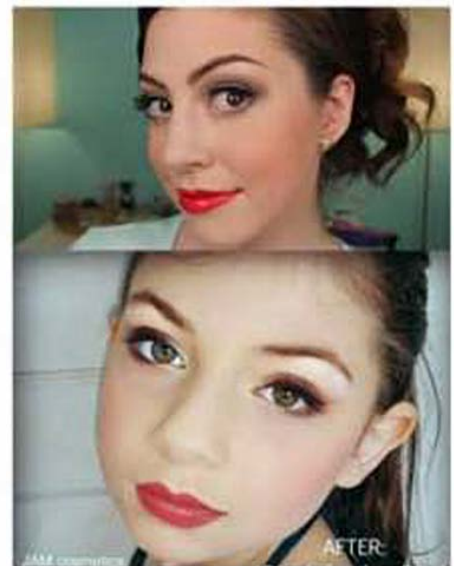
HAIR

Hair must be off your face. If you are wearing it out as your character the front pieces must be pulled back!

Hairspray - strong hold

Bobby pins - same as hair colour

Hair ties



BITS AND BOBS

Make up removal wipes

Tissues

Safety Pins

Scissors

MALES:

MAKE UP

Foundation - one that will give good coverage and the right colour for their skin tone. They may need a sponge to apply this.

Powder - powder is needed to set their make up so it stays put and doesn't come off on costumes or sweat off

Blush - a peachy/light rose colour is best. A blush brush will be needed to apply this.

Mascara - waterproof black so it doesn't run.

Lip Balm - something to bring the lips out e.g. paw paw ointment, Vaseline. Or a light coloured lipstick.

Eyebrow Pencil - brown eyebrow pencil is needed to define brows. This is very important on stage.

HAIR

Hair must be off your face. Please use gel to make sure it does not fall into your eyes or cover your face.

Hairspray - strong hold

Hair Gel

Bobby pins - same as hair colour

Brush/comb

BITS AND BOBS

Make up removal wipes

Tissues

Safety Pins

Scissors

PRODUCTS:

I have listed these from the top of the range going down, this is pretty much price listed high to low also. There are ALOT of brands out there, I have only listed 3 for those that are not quite savvy on make up. Everyone's skin is different, so some of the top range products might not work best on your skin, it is best to go in and try!

I have listed the brand, where it can be purchased, my recommendation for colour, and rough cost.

-MAC COSMETICS - Found at David Jones - <http://www.maccosmetics.com.au>

- Studio fix foundation fluid- \$49
- Studio careblend/pressed powder- \$43
- Studio tech (two in one/instead of the above two but not as great coverage)- \$56
- Pro longwear blush \$43
- Pro longwear eyeliner in 'black ice'- \$35
- Veluxe pearl fusion shadow (eyeshadow) in 'smoke luxe'- \$65
- False lashes mascara waterproof- \$42
- Pro lonwear lip creme in 'overtime'- \$40
- Brow pencil/crayon, try colours for what best suits - \$30

-L'OREAL - Priceline/kmart/target/Big W/some chemists

- Infallible foundation- \$31.95
- Infallible powder- \$16.22
- True match blush- \$25.95
- Colour Riche quads eyeshadow in 'Forever Bronze'- \$23.95
- Super liner perfect slim eyeliner in black- \$24.45
- Volume million lashes mascara in waterproof black- \$27.95
- Infallible le rouge lipstick in 'Beyond Blushing'- \$24.95
- Brow artist designer pencil in brown - \$18.95

-RIMMEL - Priceline/kmart/target/Big W/some chemists

- Lasting finish 25hr foundation- \$18.95
- Stay matte pressed powder- \$11.95
- Mono blush in 'pink rose'- \$9.95
- Glam eyes eyeshadow in 'smokey brun'- \$14.95
- Scandal'eyes waterproof eyeliner in black- \$9.95
- Waterproof mascara in black- \$16.95
- Lasting finish lipstick in 'pink blush'- \$9.95
- Professional eyebrow pencil in brown - \$8.95